

MaLou Art Consulting June 2020 Newsletter

MaLou Art Consulting Newsletter in June will introduce world art news, new collaborations, exhibitions and discussion. All these activities give the chance to become more familiar with art as part of life and aesthetics.

CURRENT EXHIBITION

“Inner Aspects of Konstantinos Michalos or Praise to the Paradox”

Solo exhibition by Konstantinos Michalos in MaLou Art Consulting Online Gallery 20th of May – 20th of June, 2020

Konstantinos Michalos belongs to a new artist generation, where personal expression prevails over a stylistic proposition. Thus, his artwork is more empirical than depicting a certain technique. Through his paintings, he expresses his psychological drives as well as his philosophical, spiritual and social concepts.’



The Gate

When we meditate, we sometimes experience it – the crossing over to a new level of consciousness. There are natural and chemical substances that can invoke this crossing, but also tiny things of life that touch us, a look in someone’s eyes that moves us.

But a spontaneous crossing over to a new level of awareness also awaits the scientist, who makes a discovery, and the artist who creates value by creating beautiful things, thought provoking things, terrifying and galvanizing objects that have the power to stir others.

**Dedication to El Greco
Storm in Toledo**



A cleansing act of nature wipes the town roofs clean, weeds out the small rubbish, polishes the surfaces of the streets. The storm bounces upon the well-established buildings, upon made-up minds and opinions. Solid structures are under bombardment, they are forced to break down. Smoothness and soundness splits, letting in drops, creaks, and streams. Every storm ends. The town is new, and sparkling.

View the exhibition “ Inner Aspects of Konstantinos Michalos or Praise to the Parodoxe” online.

**VISIT
EXHIBITION**

A room where metaphysical questions arise

Maja Berseneva

MA Philosophy, Philosophical research in the areas of embodiment, subjectivity, vulnerability and engaged phenomenology. Freie Universität Berlin, Panteio University of Athens.

24th May 2020

Before the accommodation in a gallery, the canvas is at home in a different space. We, the art lovers, can trace this space back by using our imagination. Physically, it could be an atelier, a corner in a room, with a certain light. We can picture this atelier, this room, in our minds. But only the painter knows her or his working space. Kostas Michalos knows where his paintings were born and underwent their production. He might have shown his atelier to a few friends, but gallery visitors will never see it. And yet, the birth place of each painting is not a room with a special light. The actual place

of origin is Kostas Michalos' perception, the thoughts he had at that time, his emotions, and even his relationships with others. The place of origin is also the movements of the artist's hands, the swaying of his body while he paints. The painting in making is, as it were, immersed in the body of the particular individual Kostas Michalos and vice versa, the individual is immersed in the painting. Art theorists and philosophers agree with this. 'The painter takes his body with him', says Paul Valéry. He means by this that that a pure mind cannot paint, and paintings are not a product of pure thought or idea. Maurice Merleau-Ponty, in *Eye and Mind*, speaks about the bodily movement directly related to the self. 'My movement is not a decision made by the mind [...]. It is the natural sequel to and the maturation of vision. My body moves *itself*; my movement unfolds *itself* [...]. It radiates from a self.' By contemplating art, we do not discuss science, nor try to find causalities. Rather, we try to address and permeate the impossible – subjectivity. We are talking here about a self of the artist, his core, his being. This being is foreign, and an enigma to us.

A fellow human being is a stranger. This is why paintings are never completely accessible, this is why they usually provoke, stir up, and confuse. The spectator cannot get into the head of the artist. Difficult emotions radiate from the art of Kostas Michalos. Every image we are confronted with is an end-product of the being of the artist, but it is by no means an accomplished thing, nor a commodity. The image appears finished - here are the strokes of paint, fixed to the underlying canvas. We recognize the accomplished shape and even the artists' signature in the down right corner. But actually, every painting is unfinished, and a mystery. The mystery holds a story that wants to unfold, and does so in various ways, according to the number of pairs of eyes that view it. If we forget the ticking of the clock and hold still in front of a painting, questions will arise - from simple to layered. For instance, why did a brown reddish colour palette in this painting appear to the artist more fitting than a blue one? What inspires the painter to express himself in this and no other way? Again, we can never tell. However, we sense that Kostas Michalos' addresses questions that concern us all, and this is the path we can follow him into his radiant images. These questions are metaphysical - they deal with being on a subordinate level. However, they are also material and down-to-earth, for they place forces and energies that determine human bodily and spiritual lives into the spotlight. We see whirl winds and storms, streams,

geometrical shapes, but also very prominently, human body shapes. Kostas Michalos is passionate in expressing what his intuitions whispers to him about being. They might whisper that being involves becoming. The things around us, and we ourselves, do not have fixed shapes but are subjected to change and evolvment, but also to decay. Changes on the other hand, throw us humans into the clutches of fears, and we often resist them. We find such fears as restraining powers in paintings like 'The gate', 'The outburst', or 'The burning sphere', as well as in all the paintings titled 'Internment'. Many art works of Kostas Michalos are rich in substance, rich in emotion, and by no means are they comfortable to look at. They do not provide a place of rest neither to the eye, nor to the mind. While being exposed to the paintings, we feel an upheaval in our own body, we might even notice increased heartbeat. It is the intensity of burning, urgent metaphysical questions in Kostas Michalos' art that strike and moves the most. The painter faces uncomfortable areas of our existence that often touch on the periphery of life, on edge situations that substantially transform the individual. The artist finds his own *poesis* in the struggle to express a basicness of life. Somewhere within, or in-between the strokes of saturated blues, reds, browns, and pinks, he manifests his artistic language, along with his admirable fearlessness to address fears.

P.S The MaLou Art Consulting Management thanks the philosopher Maja Berseneva for her excellent description of Konstantinos Michalos' paintings.

P A S T E X H I B I T I O N S

Solo exhibition "In Between" by Vassiliki Koskiniotou

The Greek Artist VASSILIKI KOSKINIOTOU exhibited her artworks at a solo exhibition "IN BETWEEN" 17th of April -17th of May 2020 in MaLou Art Consulting Online Gallery.

"Color and I are one": Paul Klee's famous phrase is evident for this Greek painter who draws her inspiration from the abounding sources of nature's beauty and energy, but also from language and poetry as the most significant expressions of the human condition.



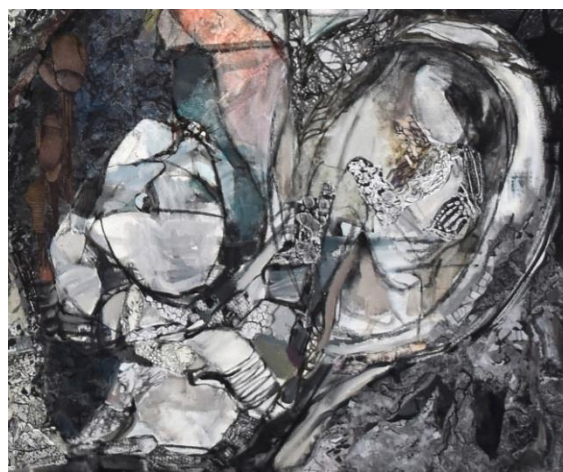
For more information and available works, visit MaLou Art Consulting Online Gallery.

**VISIT
EXHIBITION**

Solo exhibition “ The Society of the Spectacle” by Sophia Papadopoulou

The Greek Artist SOPHIA PAPADOPOULOU exhibited her artworks at a solo exhibition “THE SOCIETY of the SPECTACLE” 16th of March-16th of April 2020 in the MaLou Art Consulting Online Gallery.

The exhibition exposes not only a collection of images, but also the social relations of the people, which are mediated through the images.



For more information and available works visit MaLou Art Consulting Online Gallery

**VISIT
EXHIBITION**

ART IN OUR HOME

Why do we need art in our home? Why we all need a few special pieces of original artwork in our living spaces?

A piece of art is so much more than its aesthetic attributes. Art makes a home more human. Art help us validate and recognize our emotion .We need to feel comfortable in our place. Surrounding yourself with art you love will help you enjoy where you spend a majority of your time. Besides this, the original artwork has a value.

Seascape Paintings



V.Franchuk The Wind Catchers oil on canvas 90x108cm 2003
Price 4.200€

COLLECT



D.Salov Cape Sounion with Temple of Poseidon oil on canvas 70x50 cm, 1995
Price 1.200€

COLLECT



Unidentified, Boats at the Pier oil on canvas the beginning of the 20th century
Price 2.500 €

COLLECT



B.Jenkins, River Landscape with Boats and Windmill oil on wood panel
30x40cm beginning of 20th century
Price 1.200€

COLLECT

ART WORLD NEWS



The Money in Imagination

[Read more](#)



Great art emerged from
Traumas of the past – will
Be pandemic prove
Different?

[Read more](#)



Venice Art Biennale delayed
until 2022

[Read more](#)



Sotheby's offer major works by 20th
century. Female artists in 50\$m
Ginny Williams Collection sale

[Read more](#)

Join Our
Newsletter
Community

Contact Us : e-mail artconsulting.malou@gmail.com
+30 6956203620 (Viber, WhatsUpp)

www.malouartconsulting.com

Unsubscribe link

<https://malouartconsulting.us5.list-manage.com/unsubscribe?u=54568f00a4f9f10d1e92bbe4d&id=8920d1cf52>